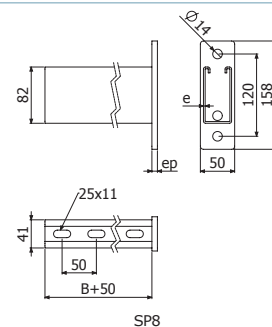




SP8



	L		e	ep	Fmáx	Mmáx	Cd	GC	
	mm	inch	mm	mm	kg	kg-m	mm/kg-m	REF.	kg/ud
SP8 400	400	15 3/4"	2,5	8	1100	115	0,070	2/9559	2,51
SP8 500	500	19 2/3"	2,5	8	1100	115	0,088	2/9560	2,96
SP8 600	600	23 5/8"	2,5	8	1100	115	0,105	2/9561	3,4
SP8 700	700	27 5/9"	2,5	8	1100	115	0,123	2/9562	3,85
SP8 800	800	31 1/2"	2,5	8	1100	115	0,140	2/9563	4,3
SP8 1000	1000	39 3/8"	2,5	8	1100	115	0,175	2/9564	5,19
SP8 1500	1500	59 "	2,5	8	1100	115	0,262	2/9565	7,43



- ISO7380 M6x25 (2/17582-EZ / 2/17601-i304) + TM41 M6 (2/17556-EZ / 2/8225-GC)
 CFBFR41 (2/10284) / ISO7380 M6x25 (2/17582-EZ / 2/17601-i304) + SSC (2/2064-EZ / 2/0363-GC) + TM41 M6 (2/17556-EZ / 2/8225-GC)
 DIN933 M10x30 (2/17547-i304) + BFE M10 (2/0864-GC) + TM41 M10 (2/17584-GC)



SPD



	L		e	ep	Fmáx	Mmáx	Cd	GC		e	Fmáx	Mmáx	Cd	i304		i316	
	mm	inch	mm	mm	kg	kg-m	mm/kg-m	REF.	kg/ud	mm	kg	kg-m	mm/kg-m	REF.	kg/ud	REF.	kg/ud
SPD 500	500	20"	2,5	8	1100	133	0,147	2/6272	3,18	2	1144	141	0,139	2/18134	3,03	2/18468	3,03
SPD 600	600	24"	2,5	8	1100	133	0,179	2/5621	3,71	2	1144	141	0,17	2/18135	3,54	2/18469	3,54
SPD 700	700	28"	2,5	8	1100	133	0,211	2/6273	4,24	2	1144	141	0,20	2/18136	4,04	2/18470	4,04
SPD 800	800	32"	2,5	8	1100	133	0,263	2/6274	4,77	2	1144	141	0,249	2/18137	4,55	2/18471	4,55
SPD 1000	1000	40"	2,5	8	1100	133	0,316	2/4641	5,84	2	1144	141	0,299	2/18138	5,57	2/18472	5,57

TF41 PVC (2/5627)

- SCR/SRB + 2/100 TEP M10x30 (2/17567-EZ)
 SHL/SHR/SP/SPD + 2/100 DIN933 M10x30 (2/17547-i304) + 2/100 x TM41 M10 (2/17584-GC / 2/18525-i304 / 2/17612-i316)



TF41

